

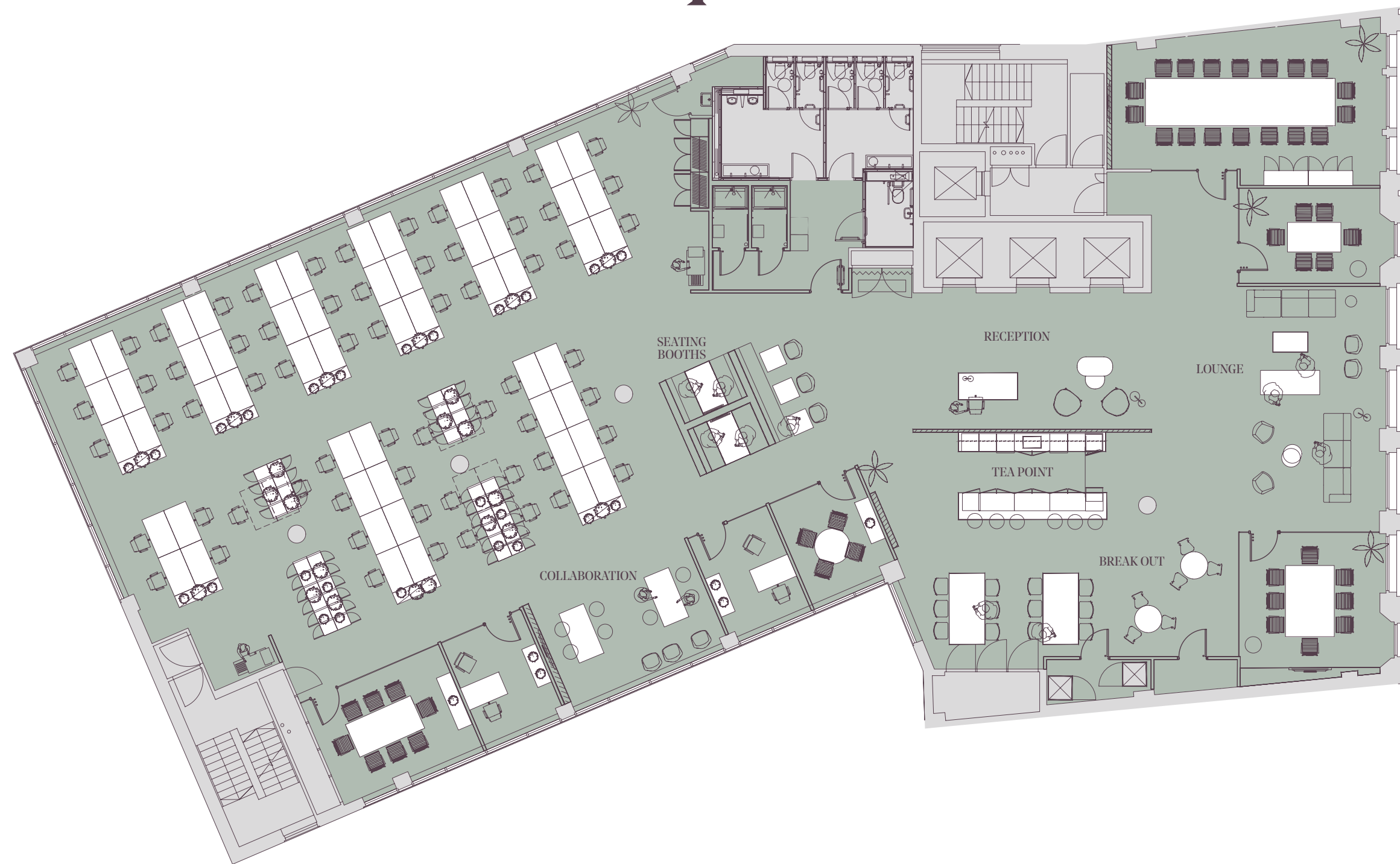


Bishopsgate

Plans

2nd and 3rd floor space plans

Second Floor – 7,959 sq. ft



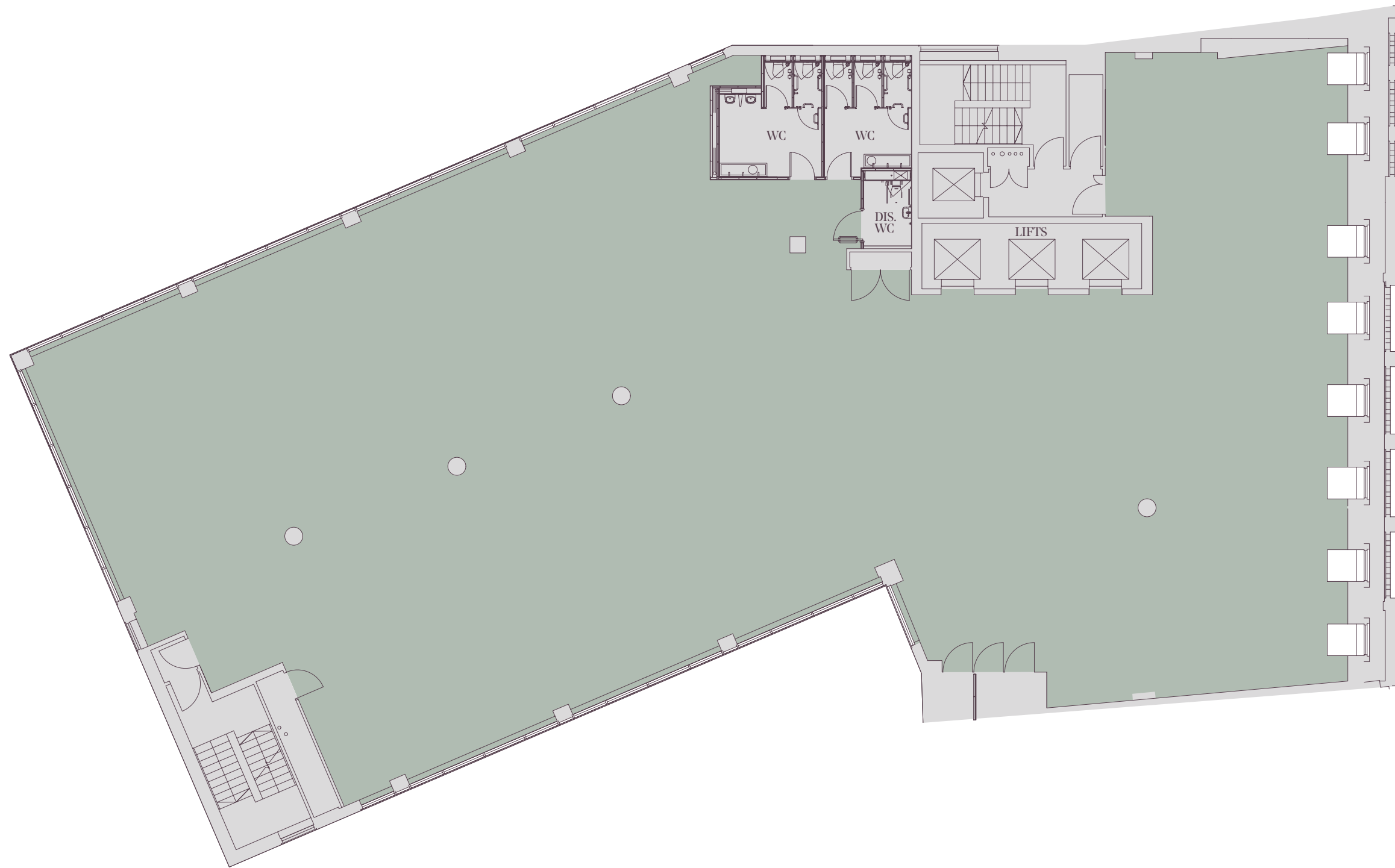
Third Floor – 7,908 sq. ft



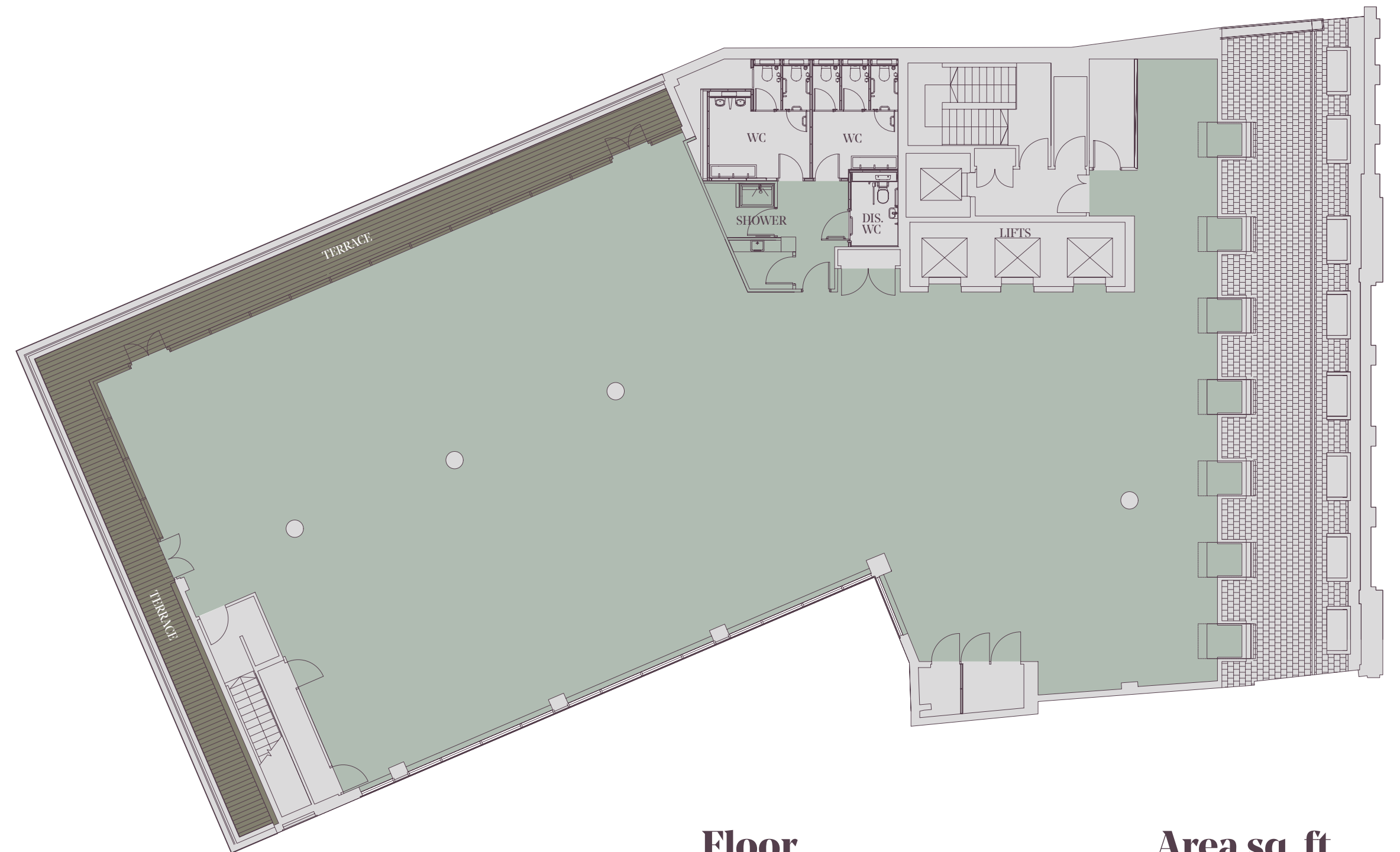
Floor	Area sq. ft
Second Floor	7,959
Third Floor	7,908
Total	15,867

Blank canvas floorplans

Fifth Floor – 7,622 sq. ft



Sixth Floor (with terrace) – 6,084 sq. ft



Floor	Area sq. ft
Fifth Floor	7,622
Sixth Floor (with terrace)	6,084
Total	13,706

**For any further information
please contact one of our agents:**

INGLEBY TRICE.

George Haworth

T: 020 7029 3625

M: 07872 960 406

g.haworth@inglebytrice.co.uk

Malcolm Trice

T: 020 7029 3612

M: 07860 305 024

m.trice@inglebytrice.co.uk

inglebytrice.co.uk

BentallGreenOak 
on behalf of WELPUT

CBRE

Hannah Grint

T: 020 3257 6341

M: 07545 868 543

hannah.grint@cbre.com

Tom Meijer

T: 020 7182 2778

M: 07540 595 379

tom.meijer@cbre.com

cbre.co.uk

Subject to contract. Ingleby Trice and CBRE for themselves and the lessor of this property give notice that these particulars do not form, or form part of, any offer or contract. They are intended to give fair description of the property and whilst every effort has been made to ensure their accuracy this cannot be guaranteed. Any intending lessee must therefore satisfy themselves by inspection or otherwise. Neither Ingleby Trice and CBRE, nor any of its employees, has any authority to make or give any further representations or warranty whatsoever in relation to this property. All prices and rents quoted are net of VAT.

7bishopsgate.co.uk